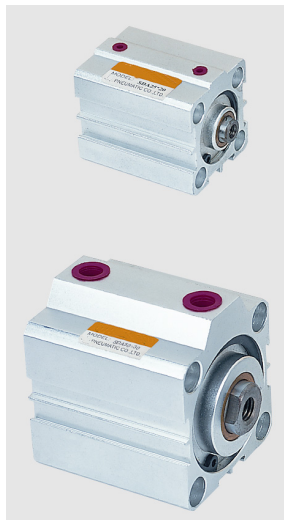
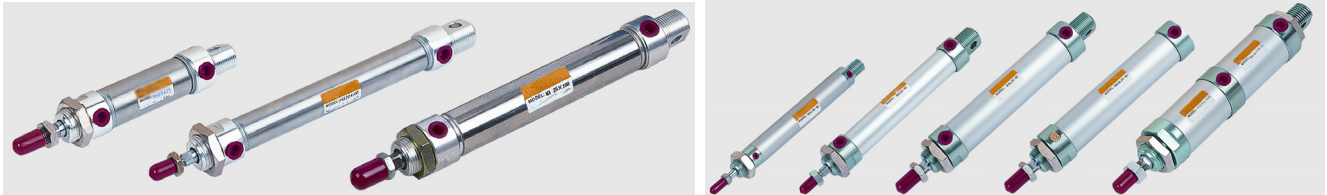


# STC Air Cylinders

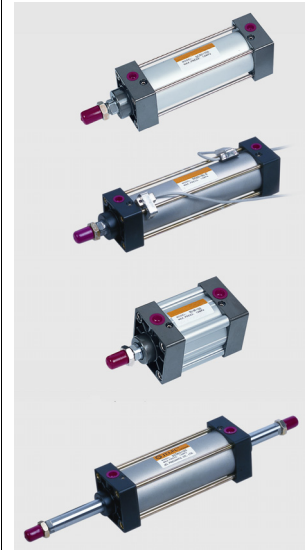


Precision Engineered

Fine Quality



Advanced Design



Excellent Prices



Air Cylinders



connects fluid power to industrial automation™

# Table of Contents

STC Air Cylinder Numbering System.....F2

Cylinder Mounting Bracket Dimensions.....F3

MA & MAL Series Round Cylinder Dimensions.....F4-5

SC Series Tie Rod Cylinder Dimensions.....F6

SDA/SSA/STA Series Compact Cylinder Dimensions.....F7-8

## STC Air Cylinder Numbering System

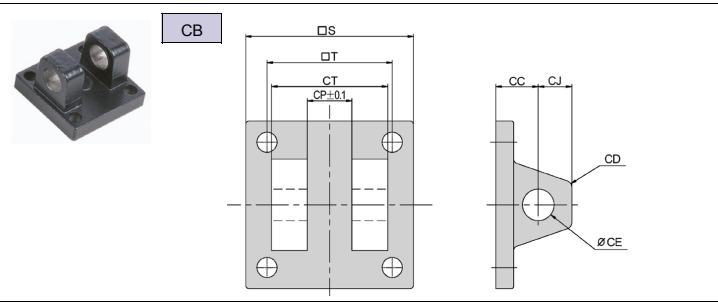
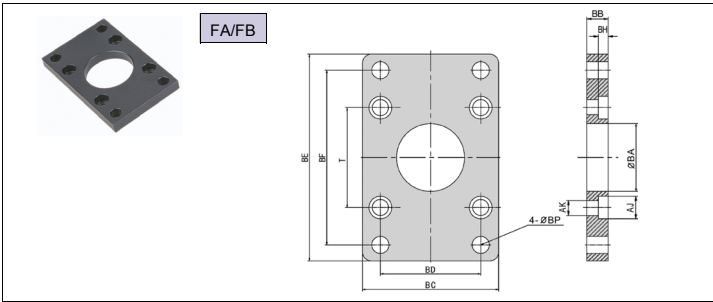
Ordering Part No. =  
(eg. MA 16-25-SA)



Model	Bore (mm)	Stroke (mm)	Mounting	Options
<b>MA Series Stainless Steel Round Cylinder</b>				
MA = Double Acting	16	25-500	Blank = Front Nose Mount and Back Pivot Mount (Standard)  U = Front Nose Mount  LB = Foot Mount	S = Magnet for Hall Sensor  J = Adjustable Stroke Length (in MM)  A = Air Cushion (Bumper Standard)  R = Reed Switch 5-240 V (DC/AC) 100 mA 10W
MAS = Single Acting	20			
MAD = Double Shaft	25			
MAL = Double Shaft with Adjustable Stroke	32			
MALJ = Double Shaft with Adjustable Stroke	40			
<b>MAL Series Aluminum Round Cylinder</b>				
MAL = Double Acting	16	25-500	Blank = Front Nose Mount and Back Pivot Mount (Standard)  U = Front Nose Mount  LB = Foot Mount	S = Magnet for Hall Sensor  J = Adjustable Stroke Length (in MM)  A = Air Cushion (Bumper Standard)  R = Reed Switch 5-240 V (DC/AC) 100 mA 10W
MALS = Single Acting	20			
MALD = Double Shaft	25			
MALJ = Double Shaft with Adjustable Stroke	32			
MALJ = Double Shaft with Adjustable Stroke	40			
<b>SC Series Tie-Rod Cylinder</b>				
SC = Double Acting SCA = Single Acting SCD = Double Shaft SCJ = Double Shaft with Adjustable Stroke	32	25-1000	FA = Front Flange Type  FB = Back Flange  CA = Pivot Bracket with Pin  CB = Clevis Bracket with Pin  LB = Foot Mount  TC = Swing Type	S = Magnet for Hall Sensor  J = Adjustable Stroke Length (in MM)  A = Air Cushion (Bumper Standard)  R = Reed Switch 5-240 V (DC/AC) 100 mA 10W
	40			
	50			
	63			
	80			
	100			
<b>SU Series Enclosed Tie-Rod Cylinder</b>				
SU = Double Acting SUA = Single Acting SUD = Double Shaft SUJ = Double Shaft with Adjustable Stroke	32	25-1000	FA = Front Flange Type  FB = Back Flange  CA = Pivot Bracket with Pin  CB = Clevis Bracket with Pin  LB = Foot Mount  TC = Swing Type	S = Magnet for Hall Sensor  J = Adjustable Stroke Length (in MM)  R = Reed Switch 5-240 V (DC/AC) 100 mA 10W
	40			
	50			
	63			
	80			
	100			
<b>SDA Series Compact Round Cylinder</b>				
SDA = Double Acting SSA = Single Acting STA = Reverse Acting SDAD = Double Shaft	12	25-1000	TCM = Swinging Type attaching foot seat	S = Magnet for Hall Sensor  J = Adjustable Stroke Length (in MM)  R = Reed Switch 5-240 V (DC/AC) 100 mA 10W
	16			
	20			
	25			
	32			
	40			
	50			
	63			
80				
100				

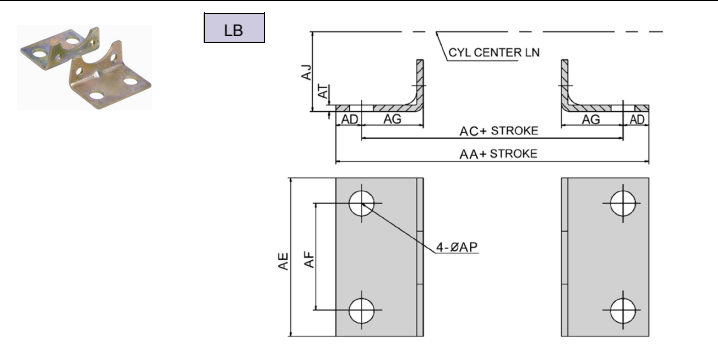
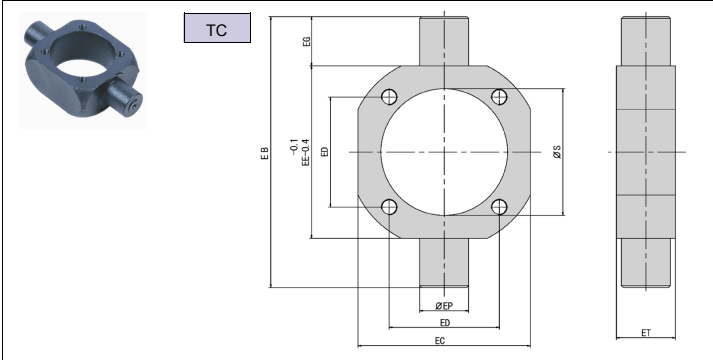
Part No.	Description	Specifications
AL-11R-MA	Reed Switch for MA cylinder	Reed Switch 5-240 V (DC/AC) 100 mA 10W
AL-11R-MAL	Reed Switch for MAL cylinder	
AL-11R-SC	Reed Switch for SC cylinder	
AL-11R-SDA	Reed Switch for SDA cylinder	
AL-11R-SU	Reed Switch for SU cylinder	

# Cylinder Mounting Bracket Dimensions



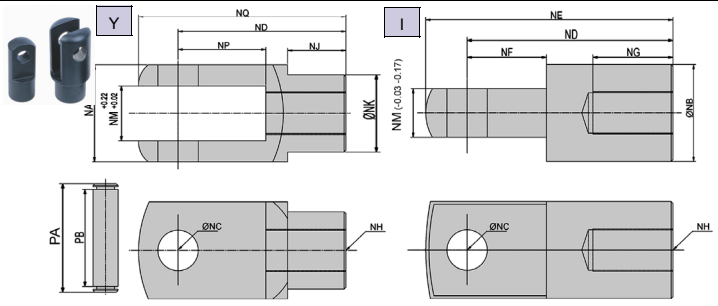
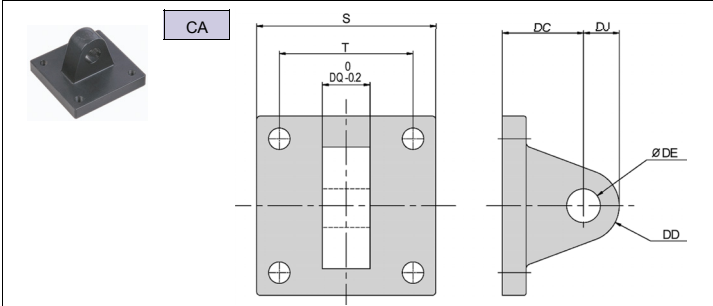
FA/FB (Front or Back Flange)									
BORE	32	40	50	63	80	100	125	160	200
BA	28.3	32.3	38.3	38.3	47.3	47.5	56	63	81
BB	10	10	10	12	16	16	20	25	25
BC	47	52	65	76	95	115	140	180	220
BD	33	36	47	56	70	84	90	115	135
BE	72	84	104	116	143	162	224	280	320
BF	58	70	86	98	119	138	180	230	270
BG	6.5	6.5	6.5	8.5	11	11	15	20	20
BH	11	11	14	14	17	17	19	25	25
BJ	6.5	6.5	8.5	8.5	11	11	13	17	17
BP	7	7	9	9	12	12	16	18	22
T	33	37	47	56	70	84	110	140	175

CB (Double Rear Clevis Bracket with Pin)									
BORE	32	40	50	63	80	100	125	160	200
CC	19	19	19	19	32	32	50	55	60
CD	5	5	3	3	8	8	25	30	30
CE	12	14	14	14	20	20	25	30	30
CJ	13	13	15	15	21	21	25	30	30
CP	16	21	20	20	32	32	70	90	90
CT	32	44	52	52	64	64	120	160	160
PAI	41	52	60	60	74	74	130	170	170
PBI	34	46	54	54	66	66	122	162	162
S	48	50	62	75	94	112	140	180	220
T	33	37	47	56	70	84	110	140	175



TC (Center Trunnion)								
BORE	40	50	63	80	100	125	160	200
EB	113	126	138	164	182	210	264	336
EC	63	76	88	114	132	160	200	240
ED	37	47	56	70	84	110	140	175
EE	63	76	88	114	132	160	200	240
EG	25	25	25	25	25	25	32	48
EP	25	25	25	25	25	25	32	38
ET	30	30	30	30	30	30	38	44
S	46	56	69	88	108	135	173	213

LB (Foot Mount)									
BORE	32	40	50	63	80	100	125	160	200
AA	153	169	173	184	200	210	249	328	380
AC	134	140	149	158	168	174	213	288	320
AD	9.5	15	12	12	16	18	18	20	30
AE	50	57	68	80	97	112	140	180	220
AF	33	36	47	56	70	84	90	115	135
AG	21	24	28	31	30	30	45	60	70
AJ	28	30	37	41	49	57	90	115	135
AP	9	12	12	12	14	14	16	18	22
AT	3.2	3.2	3.2	3.2	4	4	8	8	10



CA (Single Rear Clevis with Pin)									
BORE	32	40	50	63	80	100	125	160	200
S	48	50	62	75	94	112	140	180	220
T	33	37	47	56	70	84	110	140	175
DC	34	34	34	34	48	48	50	55	60
DD	14	14	15	15	20	20	25	30	30
DE	12	14	14	14	20	20	25	30	30
DL	14	14	15	15	20	20	25	30	30
DQ	16	20	20	20	32	32	70	90	90

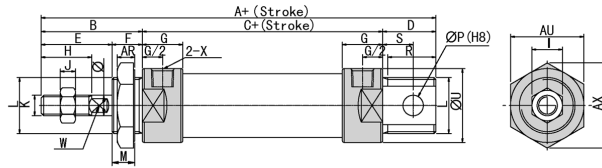
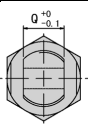
Y (Rod Clevis with Pin), I (Rod Pivot with Pin)															
	NA	NB	NC	ND	NE	NF	NG	NH	NJ	NK	NM	NP	NQ	PA	PB
32	19	20	10	40	52	15	20	M10X1.25	12	18	10	20	52	26	20
40	25	24	12	48	67	24	20	M12X1.25	20	23	12	24	62	33	27
50	32	32	16	64	89	32	23	M16X1.5	22	30	16	32	83	39	33
63	32	32	16	64	89	32	23	M16X1.5	22	30	16	32	83	39	33
80	44	40	20	80	112	40	30	M20X1.5	30	39	20	40	105	53	45
100	44	40	20	80	112	40	30	M20X1.5	30	39	20	40	105	53	45

Air Cylinders

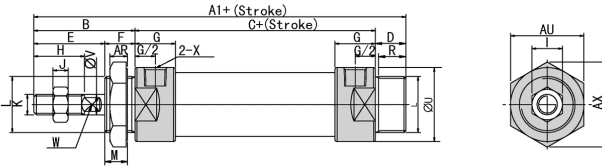
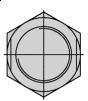


# MA Series Stainless Steel Round Cylinder Dimensions

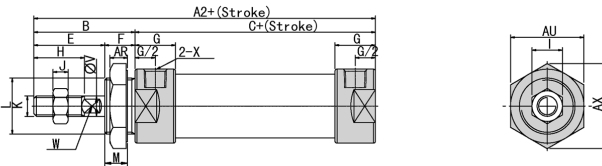
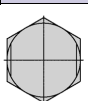
## MA-CA



## MA-CM

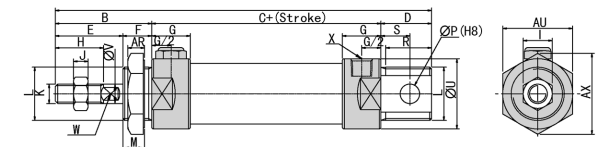
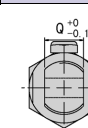


## MA-U

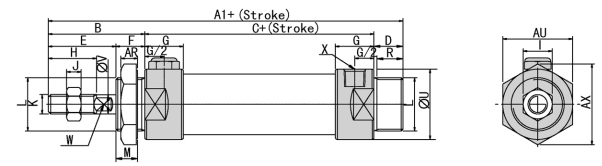
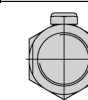


MODEL: MA														
BORE	A	A1	A2	B	C	D	D1	E	F	G	H	I	J	K
16	114	114	98	38	60	15	15	22	16	10	16	10	5	M6 X 1
20	137	128	116	40	76	21	12	28	12	16	20	12	6	M8 X 1.25
25	141	134	120	44	76	21	14	30	14	16	22	17	6	M10 X 1.25
32	147	134	120	44	76	27	14	30	14	16	22	17	6	M10 X 1.25
BORE	L	M	P	Q	R	R1	S	U	V	W	X	AR	AX	AY
16	M16 X 1.5	14	6	12	14	14	9	21	6	5	M5	6	24	28
20	M22 X 1.5	10	8	16	19	12	12	27	8	6	G1/8	7	33	29
25	M22 X 1.5	12	8	16	19	14	12	30	10	8	G1/8	7	33	29
32	M24 X 2.0	12	10	16	25	14	15	35	12	10	G1/8	8	37	32
40	M30 X 2.0	12	12	20	25	14	15	42	16	14	G1/8	9	47	41

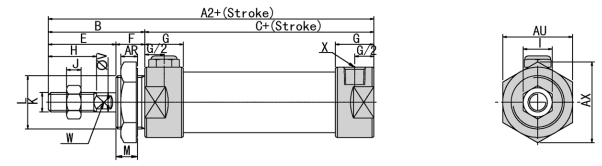
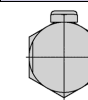
## MSA-CA



## MSA-CM

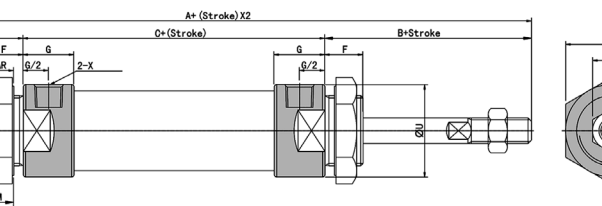
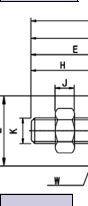


## MSA-U

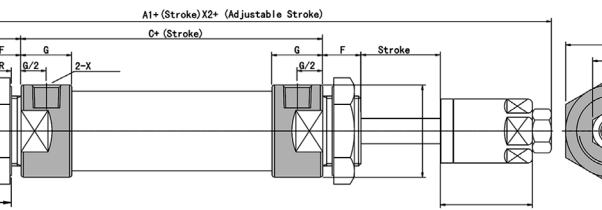
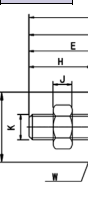


SYMBOL	A		A1		A2		B	C			D	D1	E	F	G	H	I
	0-50	51-100	0-50	51-100	0-50	51-100		0-50	51-100								
BORE	0-50	51-100	0-50	51-100	0-50	51-100		0-50	51-100								
20	137	162	128	153	116	141	40	76	101.0	21	12	28	12	16	20	12	
25	141	166	134	159	120	145	44	76	101.0	21	14	30	14	16	22	17	
32	147	172	134	159	120	145	44	76	101.0	27	14	30	14	16	22	17	
40	149	174	136	161	122	147	46	76	101.0	27	14	32	14	22	24	17	
SYMBOL	J	K	L	M	P	Q	R	R1	S	U	V	W	X	AR	AX	AY	
BORE																	
20	6	M8 X 1.25	M22 X 1.5	10	8	16	19	12	12	27	8	6	G1/8	7	33	29	
25	6	M10 X 1.25	M22 X 1.5	12	8	16	19	14	12	30	10	8	G1/8	7	33	29	
32	6	M10 X 1.25	M24 X 2.0	12	10	16	25	14	15	35	12	10	G1/8	8	37	32	
40	7	M12 X 1.25	M30 X 2.0	12	12	20	25	14	15	41.6	16	14	G1/8	9	47	41	

## MAD



## MAJ

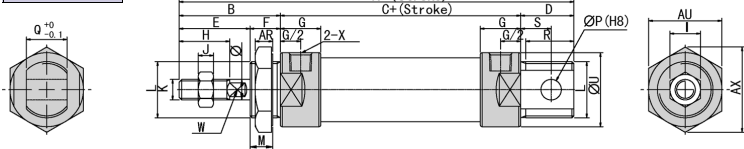


BORE	A	A1	B	C	E	F	G	H	I	J	K
20	156	153	40	70	28	12	16	20	12	6	M8 X 1.25
25	164	161	44	70	30	14	16	22	17	6	M10 X 1.25
32	164	161	44	70	30	14	16	22	17	6	M10 X 1.25
40	168	164	46	92	32	14	22	24	17	7	M12 X 1.25
BORE	L	M	U	V	W	X	AR	AX	AY	T	
20	M22 X 1.5	10	29	8	6	G1/8	7	33	29	19	
25	M22 X 1.5	12	34	10	8	G1/8	7	33	29	21	
32	M24 X 1.5	12	39.5	12	10	G1/8	8	37	32	21	
40	M30 X 2.0	12	49.5	16	14	G1/4	9	47	41	21	

Air Cylinders

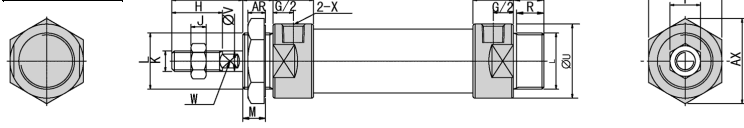
# MAL Series Aluminum Round Cylinder Dimensions

## MAL-CA

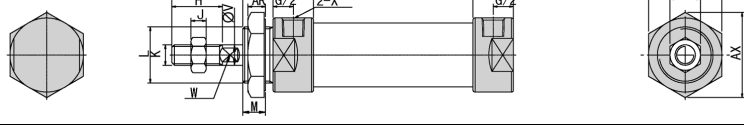


BORE	A	A1	A2	B	C	D	D1	E	F	G	H	I	J	K
16	104	104	90	38	52	15	15	24	14	11	16	10	5	M6 X 1
20	131	122	110	40	70	21	12	28	12	16	20	12	6	M8 X 1.25
25	135	128	114	44	70	21	14	30	14	16	22	17	6	M10 X 1.25
32	141	128	114	44	70	27	14	30	14	16	22	17	6	M10 X 1.25
40	165	152	138	46	92	27	14	32	14	22	24	17	7	M12 X 1.25

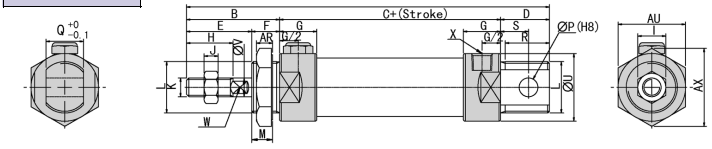
## MAL-CM



## MAL-U

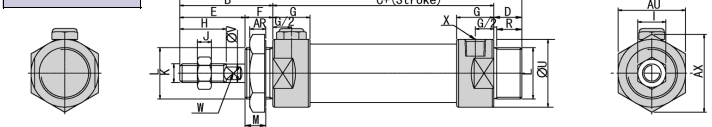


## MSAL-CA

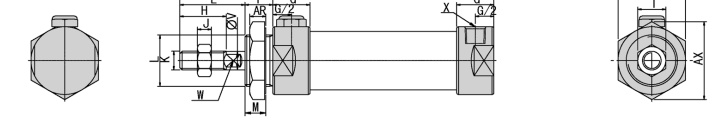


SYMBOL	A		A1		A2		B	C		D	D1	E	F	G	H	I
	0-50	51-100	0-50	51-100	0-50	51-100		0-50	51-100							
BORE	0-50	51-100	0-50	51-100	0-50	51-100		0-50	51-100							
20	131	156	122	147	110	135	40	70	95	21	12	28	12	16	20	12
25	135	160	128	153	114	139	44	70	95	21	14	30	14	16	22	17
32	141	166	128	153	114	139	44	70	95	27	14	30	14	16	22	17
40	165	190	152	177	138	163	46	92	117	27	14	32	14	22	24	17
5.5	J	K	L	M	P	Q	R	R1	S	U	V	W	X	AR	AX	AY
20	6	M8 X 1.25	M22 X 1.5	10	8	16	19	12	12	29	8	6	G1/8	7	33	29
25	6	M10 X 1.25	M22 X 1.5	12	8	16	19	14	12	34	10	8	G1/8	7	33	29
32	6	M10 X 1.25	M24 X 2.0	12	10	16	25	14	15	39.5	12	10	G1/8	8	37	32
40	7	M12 X 1.25	M30 X 2.0	12	12	20	25	14	15	49.5	16	14	G1/4	9	47	41

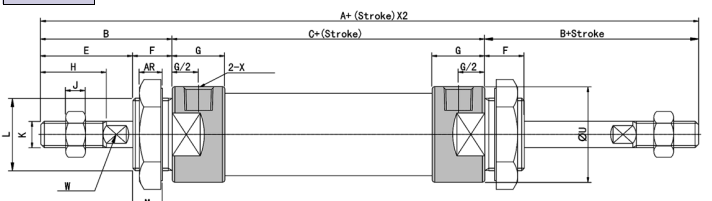
## MSAL-CM



## MSAL-U

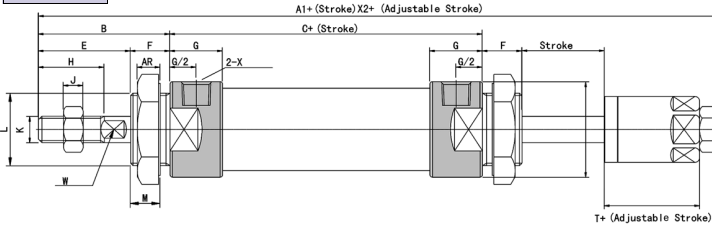


## MALD



BORE	A	A1	B	C	E	F	G	H	I	J	K
20	131	122	40	70	28	12	16	20	12	6	M8 X 1.25
25	135	128	44	70	30	14	16	22	17	6	M10 X 1.25
32	141	128	44	70	30	14	16	22	17	6	M10 X 1.25
40	165	152	46	92	32	14	22	24	17	7	M12 X 1.25

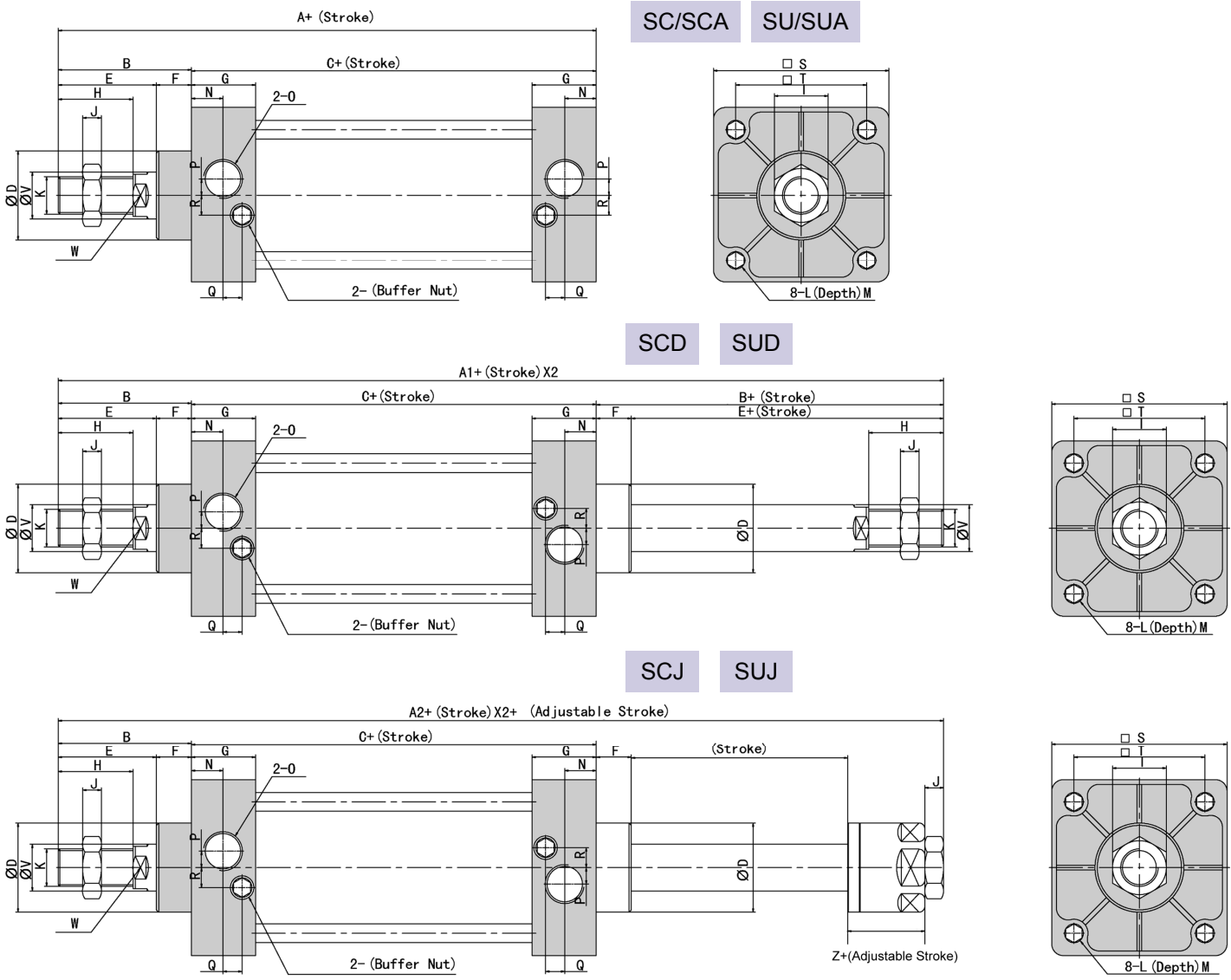
## MALJ



BORE	L	M	U	V	W	X	AR	AX	AY	T
20	M22 X 1.5	10	29	8	6	G1/8	7	33	29	19
25	M22 X 1.5	12	34	10	8	G1/8	7	33	29	21
32	M24 X 2.0	12	39.5	12	10	G1/8	8	37	32	21
40	M30 X 2.0	12	49.5	16	14	G1/4	9	47	41	21

# SC & SU Series Tie Rod Cylinder Dimensions

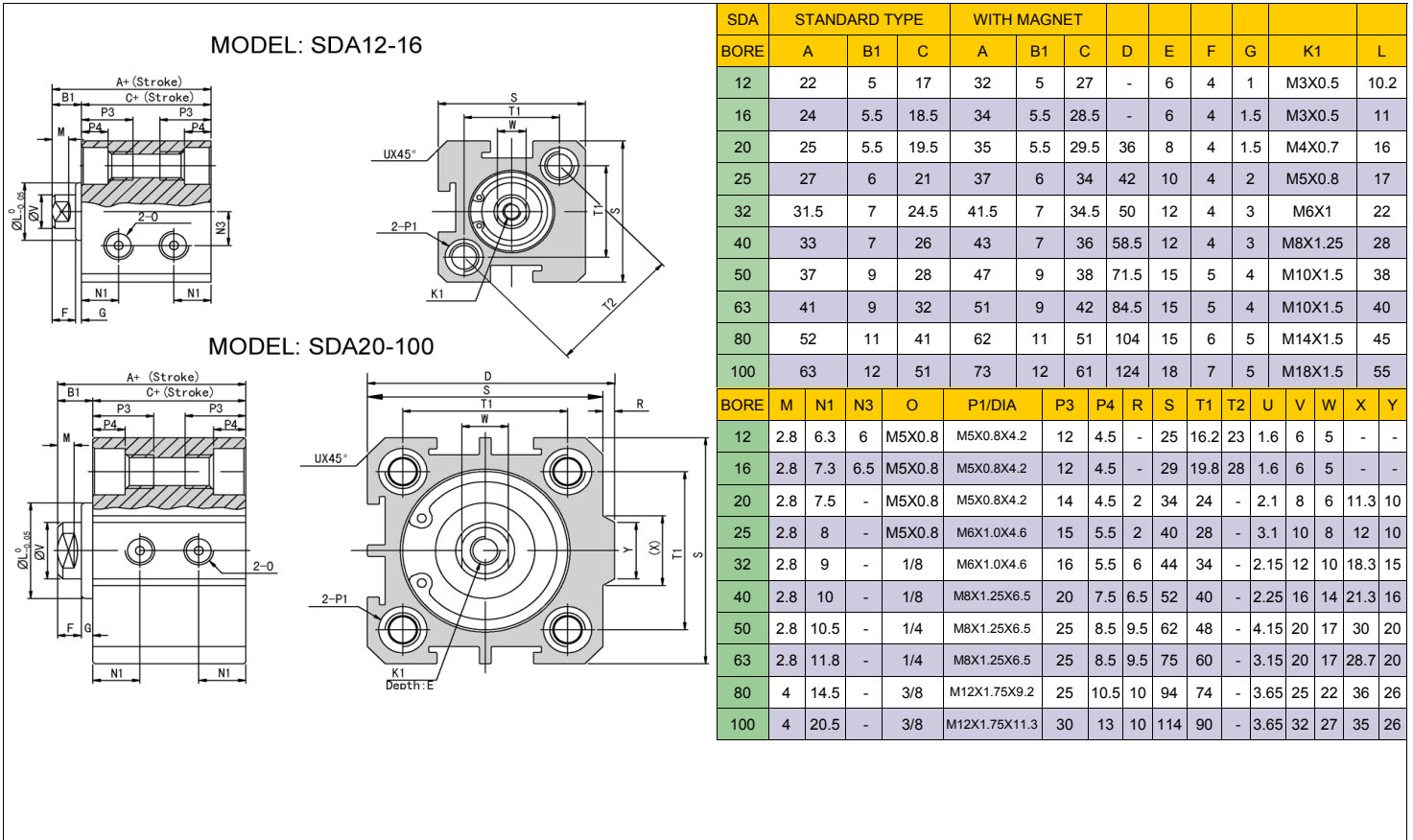
Air Cylinders



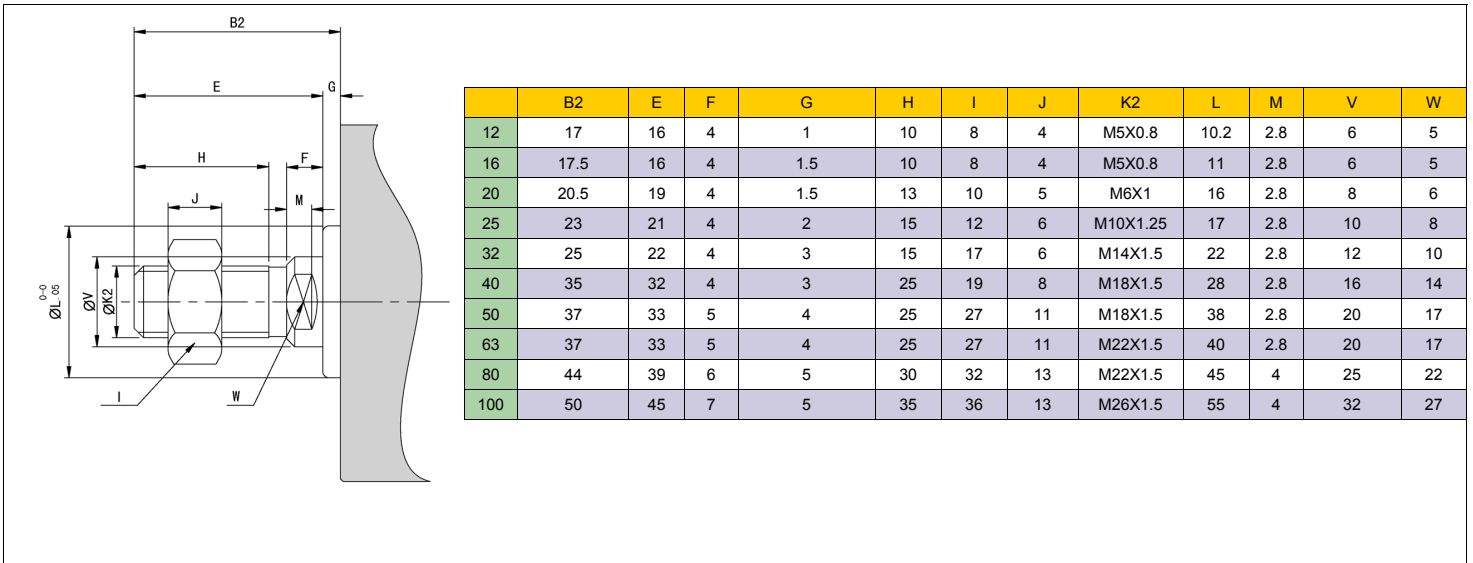
BORE	A	A1	A2	B	C	D	E	F	G	H	I	J	K	L	M	N	O	P	Q	R	S	T	V	W	Z
32	140	187	182	47	93	28	32	15	27.5	22	17	6	M10X1.25	M6X1	9.5	13.5	1/8	3.5	7.5	7	45	33	12	12	21
40	142	191	185	48	93	32	34	15	27.5	24	17	7	M12X1.25	M6X1	9.5	13.5	1/4	6	8.2	9	50	37	16	14	21
50	150	207	196	57	93	38	42	15	27.5	32	23	8	M16X1.25	M6X1	9.5	13.5	1/4	8.5	8.2	9	62	47	20	17	23
63	153	210	199	57	96	38	42	15	27.5	32	23	8	M16X1.25	M8X1.25	9.5	13.5	3/8	7	8.2	8.5	75	56	20	17	23
80	183	258	243	75	108	47	54	21	33	40	26	10	M20X1.25	M10X1.5	11.5	16.5	3/8	10	9.5	14	94	70	25	22	29
100	189	264	249	75	114	47	54	21	33	40	26	10	M20X1.25	M10X1.5	11.5	16.5	1/2	11	9.5	14	112	84	25	22	29
125	226	/	/	104	122	55	70	34	33	54	40	10	M27X1.25	M12X1.75	15.5	16.5	1/2	/	/	/	140	110	32	27	/
160	291	/	/	123	168	62	91	32	50	72	55	18	M36X1.25	M16X2	17.5	25	1/2	/	/	/	180	140	40	36	/
200	347	/	/	167	180	80	112	55	50	72	55	18	M36X1.25	M16X2	17.5	25	3/4	/	/	/	220	175	40	36	/



## SDA Series Compact Cylinder Dimensions

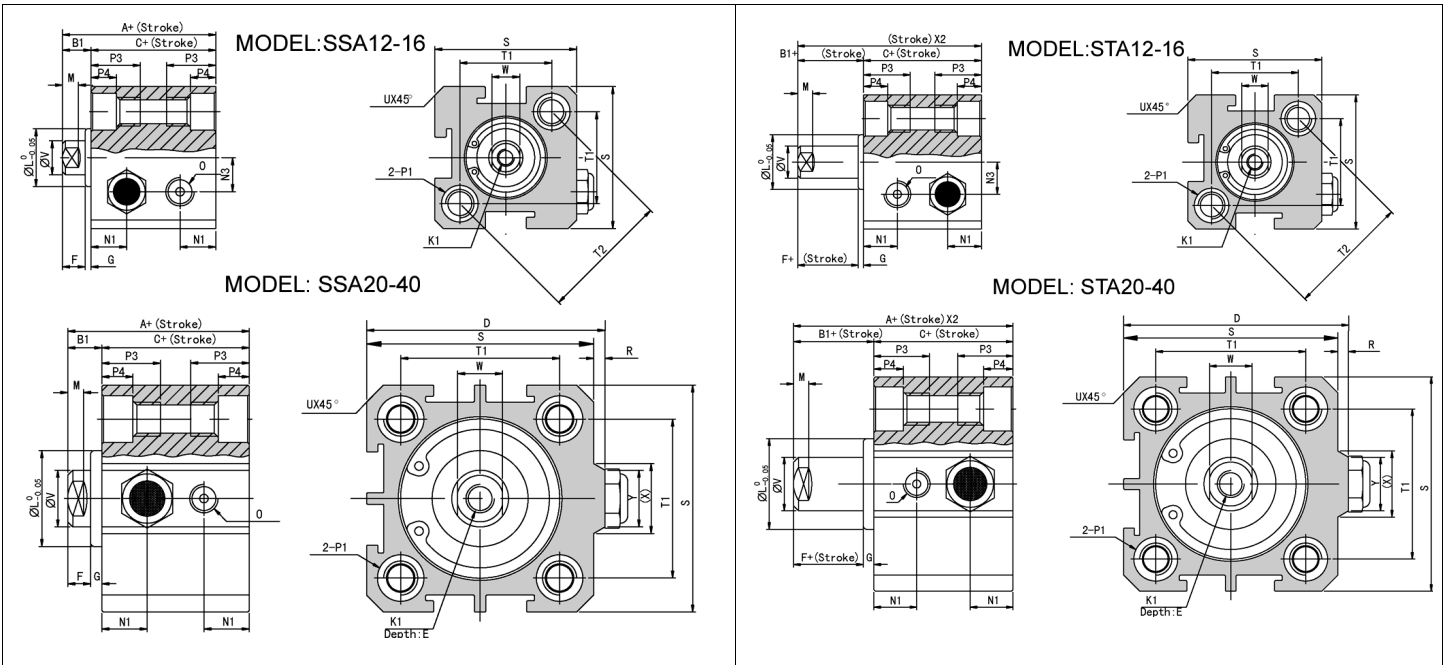


## SDA/SSA/STA Series Compact Cylinder Shaft Dimensions



# SSA/STA Series Compact Cylinder Dimensions

Air Cylinders



SYMBOL	STANDARD TYPE				WITH MAGNETIC PISTON				D	E	F	G	K1	L	M	N1	N3	O	P1/Hole Dia.	P3	P4	R	S	T1	T2	U	V	W	X	Y		
	A		B1	C		A		C																								
	≤10	>10		≤10	>10	≤10	>10	≤10																							>10	
BORE																																
12	32	42	5	27	37	42	52	5	37	47	-	6	4	1	M3X0.5	10.2	2.8	6.3	6	M5X0.8	M5X0.8X4.2	12	4.5	-	25	16.2	23	1.6	6	5	-	-
16	34	44	5.5	28.5	38.5	44	54	5.5	38.5	48.5	-	6	4	1.5	M3X0.5	11	2.8	7.3	6.5	M5X0.8	M5X0.8X4.2	12	4.5	-	29	19.8	28	1.6	6	5	-	-
20	35	45	5.5	29.5	39.5	45	55	5.5	39.5	49.5	36	8	4	1.5	M4X0.7	16	2.8	7.5	-	M5X0.8	M5X0.8X4.2	14	4.5	2	34	24	-	2.1	8	6	11.3	10
25	37	47	6	34	41	47	57	6	41	51	42	10	4	2	M5X0.8	17	2.8	8	-	M5X0.8	M6X1.0X4.6	15	5.5	2	40	28	-	3.1	10	8	12	10
32	41.5	51.5	7	34.5	44.5	51.5	61.5	7	44.5	54.5	50	12	4	3	M6X1	22	2.8	9	-	1/8	M6X1.0X4.6	16	5.5	6	44	34	-	2.15	12	10	18.3	15
40	43	53	7	36	46	53	63	7	46	56	58.5	12	4	3	M8X1.25	28	2.8	10	-	1/8	M8X1.25X6.5	20	7.5	6.5	52	40	-	2.25	16	14	21.3	16

SEE PAGE F7 FOR SHAFT DIMENSIONS



**LIMITED WARRANTY – IMPORTANT NOTICE TO PURCHASER**

Sizto Tech Corporation (STC) warrants only this product is be free from defects in materials and workmanship at the time of manufacture. This limited warranty expires one year after delivery to the end-user. STC's entire obligation to and the exclusive remedy of any party for breach of this limited warranty shall be limited to replacement of the defective product or refund of the original purchase price of this product, at STC's option. Purchaser has thirty (30) days to return the goods after STC has agreed to accept the return. All freight charges on returned material shall be paid by the Purchaser. STC's limited warranty shall not apply, however, to the product that have been subjected to misuse, alteration, accident or negligence during handling or storage.

**DISCLAIMER OF IMPLIED WARRANTIES**

All implied warranties, which may arise by implication of law or application of course of dealing or usage of trade, including, but not limited to, implied warranties of merchantability or fitness for a particular purpose are expressly excluded. There are no warranties, which extend beyond the description of the faced hereof. The end user is solely responsible for the suitability and fitness of this product selected for a particular application.

Distributed By



**Sizto Tech Corporation**

2284 Old Middlefield Way, Suite 8  
Mountain View, CA 94043 USA  
Tel: 650-938 8833, Fax: 650-938 8844  
Email: Sales@StcValve.com; www.StcValve.com